

LM

# LASEMAR<sup>®</sup> mini



LASEMAR<sup>®</sup> mini 980

LASEMAR<sup>®</sup> mini DUAL

LASEMAR<sup>®</sup> mini 1500

THE MOST COMPACT LASER AVAILABLE IN SINGLE OR COMBINED WAVELENGTH

[www.eufoton.com](http://www.eufoton.com)

**LASEmaR® MINI** is the brand new laser available in the 980 nm or the 1470 nm single wavelength or dual wavelength, combining 980 nm + 1470 nm.

The device is lighter than the classic LASEmaR® line, for an absolute portability.

The Cruise Control makes it user friendly and the **Dual Emission** gives it the multifunctionality every medical office needs. The USB port for remote diagnosis and the solid state technology will never let you down.

Discover the possible applications that this unique device offers.

## TECHNICAL ADVANTAGES

### ▶ Multifunctionality

Multi-wavelength laser platform: single and dual emission.

### ▶ Absolute portability

Thanks to the new ultra-light weight case design, available in different colours

### ▶ Software Interface M.E.I. (Minimal Easy Intuitive)

Depending on the treatment, all useful information is highlighted to help doctors reading the data clearly: Pre-set adjustable protocols, according to characteristic and ethnic group of the patient

### ▶ New intuitive display

5" brighter and more accurate Touch Screen for best visualization.

### ▶ Cruise control

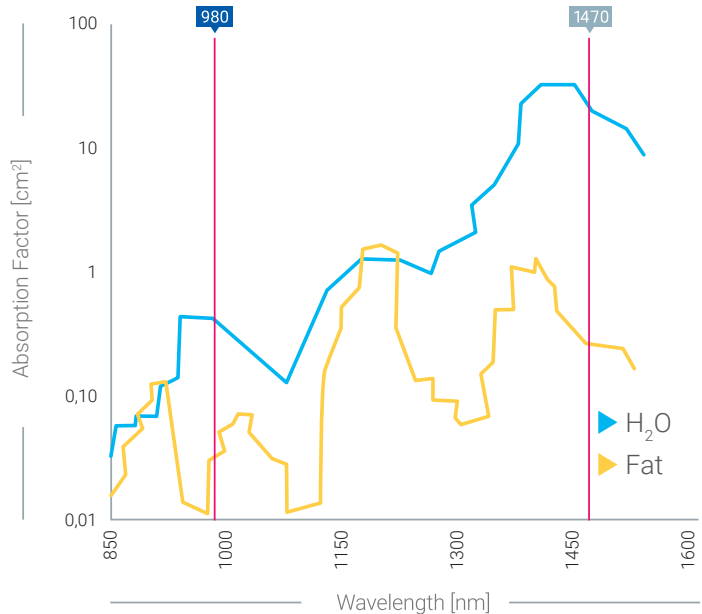
Commands to adjust easily and quickly the parameters according to the clinical case; improved audio feedbacks helps the doctor to be visually more focused on the treatment.

### ▶ Quicker technical support

Plug and Play modular components for easy and sage replacement of the internal sections; USB port for accurate remote diagnostics.

### ▶ Maximum efficiency / Minimum Maintenance

New generation solid state technology.

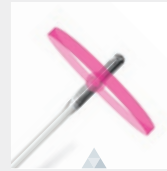


APPLICATIONS	LM MINI 1470	LM MINI 980	LM MINI DB
Gynaecology	<input type="radio"/>		<input type="radio"/>
Phlebology	<input type="radio"/>	<input type="radio"/>	<input type="radio"/>
Proctology	<input type="radio"/>		<input type="radio"/>
ENT		<input type="radio"/>	<input type="radio"/>
General Surgery	<input type="radio"/>	<input type="radio"/>	<input type="radio"/>
PLDD		<input type="radio"/>	<input type="radio"/>
Medical Therapy		<input type="radio"/>	<input type="radio"/>
Onychomycosis		<input type="radio"/>	<input type="radio"/>

Thanks to the highest water absorption **LASEmaR®MINI** permits a better endovenous occlusion applying lower energetic levels LEED (Linear Endovenous Energy Density).

Phlebological applications:

- ▶ Photobiomodulation of venous ulcers.
- ▶ Reflux of the great and small saphenous vein
- ▶ Peri-ulcerative varices.
- ▶ Fractional debridement of venous ulcers
- ▶ Collateral and reticular veins
- ▶ Photobiomodulation of venous ulcers
- ▶ Teleangectasias

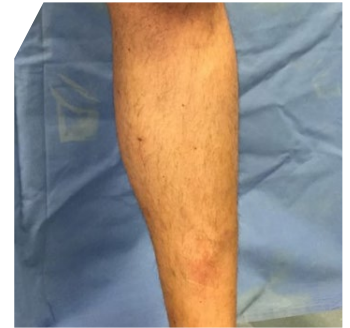
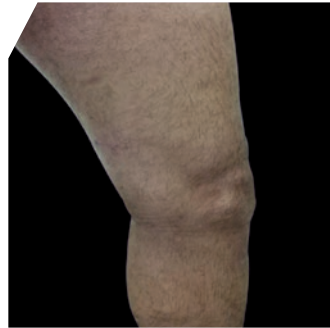


**HF RING FIBER**  
High Focused Ring Fiber with 360° emission, single use.



**INTRODUCTION KIT**  
Vein introduction kit complete of needle, dilatator, j-tip guide wire, sterile. Disposable.

**PHLEBOLOGY:** Before - After



HEMORROIDECTOMY

Hemofiber is a specially designed probes that shoots frontally and radially for hemorrhoids of grade 3 and 4 with retractable or fixed prolapse, achieving obliteration and shrinkage with limited complications, preserving the surrounding tissues.

ANAL FISTULAS HF

Ring fibers allows the closure of the fistula preserving the sphincter, without the need for medication and with a rapid return to daily routine.

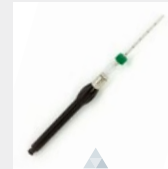
Laser Coagulation of PILONIDAL SINUS

With LCP complete healing is faster, there is little pain and no interruption to normal daily activities. It can be easily performed in an outpatient surgery environment.



HEMOFIBER

Frontal and annular emission for hemorrhoidectomy, single use. Autoclavable handpiece for insertion.



HEMO HANDPIECE

Handpiece for the mini-invasive treatment of hemorrhoids in combination with Hemofiber. With Luer Lock connector for introductory needle.

HEMORRHOIDS: Before - After



First contact.



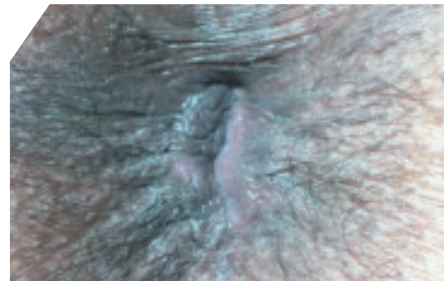
Immediately after surgery.



Day 1 after surgery.



Day 7 after surgery.



3 Weeks after surgery.



3 Weeks after surgery, internal findings.

GYNAECOLOGY

The protocol **LADYLIFT®** is a safe treatment with no side effects for: vaginal rejuvenation\*, urinary incontinence, vaginal atrophy, vaginal relaxation, diseases associated to postpartum alteration, HPV, cysts, dryness, itch.

PERCUTANEOUS LASER DISC DECOMPRESSION (PLDD)

PLDD is a procedure approved by FDA which reduces the pressure within a herniated disc (lumbar and cervical disc), relieving symptoms by decompressing the spinal nerve.

ENT

**LASEmaR®MINI** in otorhinolaryngoiatric field assures an excellent vaporization and a cut/clot of very high precision.

GENERAL SURGERY

**LASEmaR®MINI** selectively coagulates tissues at microscopic level reducing post-op inflammation and regular pain. When operating in pulsed emission mode, it vaporizes superficial lesions without any anaesthesia or stitching.

HIGH LEVEL LASER THERAPY

The beneficial effects of infrared laser with high emission power are: anti-inflammatory, analgesic, regenerative of connective tissue, biostimulant of lymphstream and of the phagocytosis.

ONYCHOMYCOSIS

**LASEmaR®MINI** generates a combined effect by laser light and high temperature that eliminates fungi from nails.

\* Treatments that, not being associated to diseases, are not in compliance with CE0476.

ACCESSORIES

	<p><b>LADYLIFT® HANDPIECE</b> For internal vaginal treatment. The handpiece is sterilizable.</p>		<p><b>SURGICAL HANPIECE CONTACT</b> For contact treatment: cutting and coagulation surgery.</p>
	<p><b>PLDD KIT</b> Optical fiber 300 micron - specific PLDD tip. Fiber locker, spinal needle.</p>		<p><b>MULTI-THERAPY HANDPIECE</b> Defocused handpiece.</p>
	<p><b>BARE FIBERS</b> Different calibres (from 100 to 1000 micron), lengths and tips (radial, ball, sphere, conic, flat) are available. 1- sterile for single use and 2- not sterile for multiple use</p>		<p><b>MULTI-THERAPY FLAT HANPIECE</b> Handpiece FLAT with interchangeable head.</p>
			<p><b>MINI-THERAPY HANDPIECE</b> Handpiece for external vaginal rejuvenation and biostimulation.</p>

## LASEmaR®MINI - TECHNICAL FEATURES

Wavelength (nm) LASEmaR® MINI 980: 980nm  
LASEmaR® MINI 1500: 1470nm  
LASEmaR® MINI DUAL 980-1470: 980nm – 1470nm independently controllable

Laser High Power Diode (GaAs)

Preselected programmes Advanced software with experienced protocols to be manually customized

Pulse duration (Ton-Toff) Adjustable from 1 to 9990 msec - step 1 ms

Number of pulses per sequence (pulsed mode) From 1 to 99 - step one

Interval between pulse sequence (pulsed mode) Adjustable 1 ms ÷ 10 sec

Operation mode Single mode - Pulsed mode - Continuous mode

Cooling system Air cooling system combined with Peltier's Cells

Aiming beam Red - 635 nm - 5 mw

Electrical power 100-240 V 50-60 Hz

Absorbed power 130 W peak (adapted to domestic electric standard)

In compliance with 93/42/CEE  
IEC 60601-1  
IEC 60601-1-2  
IEC 60601-2-22  
IEC 60825-1



Weight and dimensions 3 kg - 24 x 22,5 x 11,5 cm

Production Made in Italy

For more information about applications and accessories scan the QR-code with your tablet or smartphone.

**EUFOTON**  
medical lasers

**Eufoton Srl**  
Via Flavia 23/1 - 34148 Trieste - Italy  
Ph. +39 040 9899082 - Fax +39 040 9890555  
www.eufoton.com - info@eufoton.com

**ISO**  
**9001**  
QUALITY  
ASSURANCE

**ISO**  
**13485**  
QUALITY  
ASSURANCE



Before and after photographs are courtesy of C. Baraldi MD, L. Tessari MD, F. Zini MD.