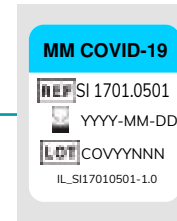




READY TO USE LAB-ON-CHIP CARTRIDGES

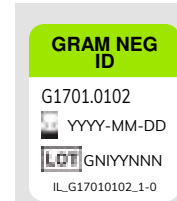
COVID-19



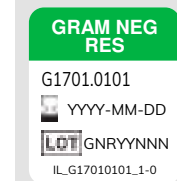
• **MM COVID-19**
code SI 1701.0501 (pack of 20 cartridges)
SARS-CoV-2 RNA genome identification
from extracted RNA



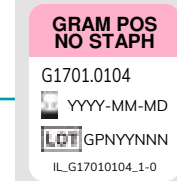
SEPSI PANEL



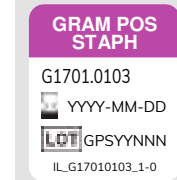
• **MM GRAM NEG ID**
code SI 1701.0102 (pack of 20 cartridges)
Acinetobacter baumannii, *Enterobacteriaceae*, *Klebsiella aerogenes*, *Enterobacter cloacae*, *Escherichia coli/Shigella* spp., *Haemophilus influenzae*, *Klebsiella oxytoca*, *Klebsiella pneumoniae*, *Neisseria meningitidis*, *Proteus* spp., *Proteus mirabilis*, *Pseudomonas aeruginosa*, *Salmonella typhi*, *Serratia marcescens*, *Stenotrophomonas maltophilia*



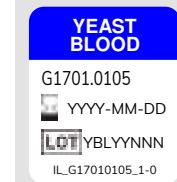
• **MM GRAM NEG RES**
code SI 1701.0101 (pack of 20 cartridges)
KPC, VIM, NDM, IMP, OXA-23-like, OXA-48-like, SHV, SHV ESBL, CTX-M-1/9 groups, CTX-M-2/8 groups, CMY-2, mcr-1, mcr-2.



• **MM GRAM POS NO STAPH**
code SI 1701.0104 (pack of 20 cartridges)
Bacillus subtilis, *Enterococcus* spp, *Enterococcus faecalis*, *Enterococcus faecium*, *Listeria monocytogenes*, *Streptococcus* spp, *Streptococcus agalactiae*, *Streptococcus anginosus*, *Streptococcus pneumoniae*, *Streptococcus pyogenes* vanA, vanB, vanC1, vanC2-3

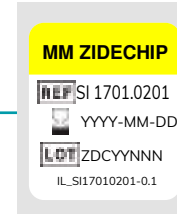


• **MM GRAM POS STAPH**
code SI 1701.0103 (pack of 20 cartridges)
Staphylococcus spp, *S. aureus*, *S. epidermidis*, *S. haemolyticus*, *S. lugdunensis*, *S. sciuri*, *S. hominis*, *S. simulans*, *S. saprophyticus*, *S. xylosus*
mecA, mecC, SSCmec-orfX, vanA e vanB



• **MM YEAST BLOOD**
code SI 1701.0105 (pack of 20 cartridges)
Candida spp., *Candida albicans*, *Candida glabrata*, *Candida krusei*, *Candida parapsilosis*, *Candida tropicalis*, *Candida auris*, *Candida lusitanae*, *Candida dubliniensis*, *Candida guilliermondii*

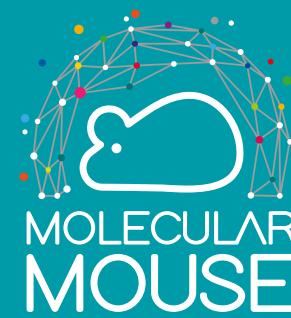
TROPICAL DISEASES*



• **MM ZIDECHIP** code SI 1701.0201 (pack of 20 cartridges)
Zika (Asia and Africa)
Chikungunya (Asia and Africa)
Dengue (1, 2, 3 and 4)



INSIDE INNOVATION



MOLECULAR MOUSE VIDEO



STM_BRO001_MOLECULAR_MOUSE_03_06_17062022_EN



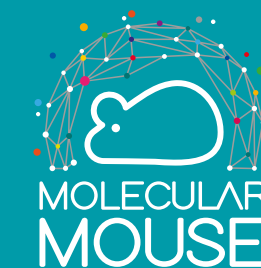
MOLECULAR MOUSE SYSTEM

THE WORLD'S FIRST HANDHELD qPCR SYSTEM

ALSO FOR SARS-CoV-2



READY TO USE LAB ON CHIP



www.alifax.com

ALIFAX S.r.l.

Via Petrarca, 2/1 - Polverara (PD) - Italy - (+39) 049 0992000 | info@alifax.com | www.alifax.com
Entered in Padova companies register at the n. 04337640280. Company stock € 10.000.000 entirely deposited. Company with single partner and subjected to direction and coordination of Alifax Holding S.p.A.

*© Copyright 2022. Alifax S.r.l. (Italy). All rights reserved - FOR PROFESSIONAL USE ONLY
*Products under development. Not CE Marked and FDA registered. Not available for sale. The products and applications listed herein may incur further changes during the development. Not for sale in US.



Molecular Mouse System

Code M.M. System: SI 1701.100/I - MOLECULAR MOUSE IVD INSTRUMENT AND SOFTWARE (included: PC, software, one Molecular Mouse Instrument with power supply, USB cable, 1 cartridge holder, 2 self check cartridges)

Qualitative and fast analysis of DNA and RNA target molecules through real-time PCR



COMPACT

EASY TO USE

RFID tag

CE IVD

Patented Technology



8.5 cm (3.34 inch)

7 cm (2.75 inch)

14 cm (5.5 inch)



SIZE
L14 x W7 x H8.5 (cm)

WEIGHT
300 g

POWER SUPPLY
12V DC, 1.6A

MOLECULAR MOUSE READY TO USE LAB-ON-CHIP

The Lab-on-Chip is an electrically active microsystem that precisely controls the reaction temperature. It is a disposable device based on a silicon chip manufactured using innovative semiconductor technology.

All necessary reagents are lyophilized in each microwell (5 µl). The **RFID tag stores product and test information used by the software to perform the analysis.

6 simultaneous multiplex reactions up to 18 targets



Performance parameters

Max. ramp rate heating: 15 °C/s (27 °F/s)
Average ramp rate heating: 4 °C/s (7.2 °F/s)
Max. ramp rate cooling: 7 °C/s (12.6 °F/s)
Average ramp rate cooling: 3.5 °C/s (6.3 °F/s)



RFID:
Radio-Frequency Identification

MOLECULAR MOUSE SOFTWARE

- Automatic analysis protocol starts through the RFID tag reading
- Up to 6 instruments can be managed independently with one software session
- Multiple level user management
- Accurate data elaboration
- Connection to LIS (Laboratory Information System)
- Results on the presence/absence of the targets are reported along with the curves
- User-friendly interface
- CE IVD

EASY AND QUICK WORKFLOW



1. Select the instrument
2. Load the sample
3. Insert the Lab-on-chip cartridge
4. Get results